



For any type of door or window system, regardless of the material that constitutes its supporting structure, functionality and performance must satisfy the legal obligations or mandatory standards that demand already excellent levels.

For each construction system, be it Wood, Wood/Aluminium, PVC, Aluminium, it is possible to vary the energy, acoustic, sealing performance against the external climate, safety, functionality, etc. by varying the type of filling components and supporting and manoeuvring devices almost common transversally to every constructive system.

The load-bearing structure, which accounts for approximately 1/3 of the raw materials, makes a huge difference to the construction system that not only characterises the product, that is the window or door, but has a very strong ENVIRONMENTAL, SOCIAL, ECONOMIC, AESTHETIC, CULTURAL influence.

**The purchase of an asset such as a window or door, for all the implications that this entails, therefore deserves considerations and reflections that today must necessarily go beyond mere economic and performance evaluation so that it becomes a responsible and informed purchase over time.**

---

## WOOD-ALUMINIUM, EVER-LASTING WINDOWS AND DOORS



CUSTOMISABLE



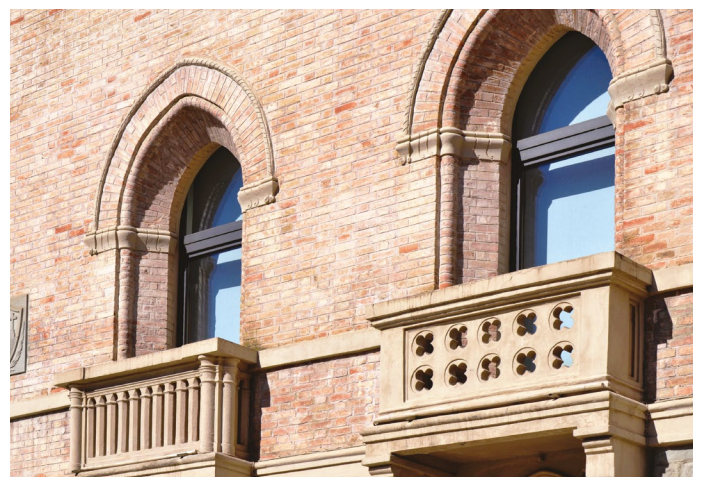
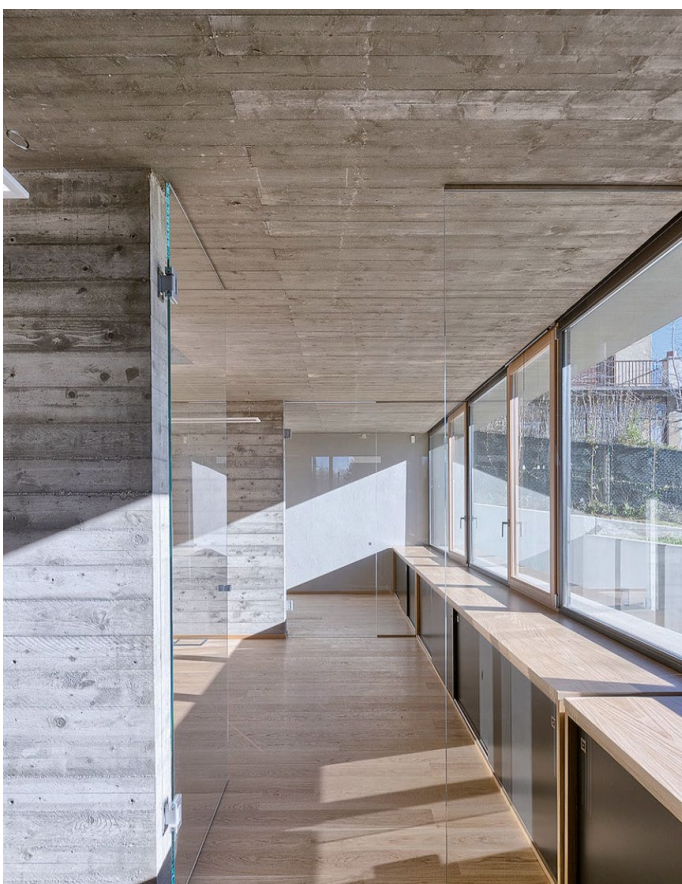
ECO-COMPATIBLE AND ECO-SUSTAINABLE



EXPRESSION OF EVOLUTION AND MODERNITY



HARMONIOUS SYNTHESIS OF ART AND TECHNOLOGY



## Characteristics



### DESCRIPTION

Windows with quadruple gasket, in 3-layer laminated wood in a choice of: pine, fir, oak, okoumè, larch or others on request and external aluminium cladding on the frame.



### WOODEN PROTECTION

Surface treatment of wood with products based on acrylic resins in aqueous emulsion; the applied cycle varies from three to six coats depending on the finish and the required durability



### DIMENSIONS

Fixed lamellar frame nominal section 64 x 70 mm.  
Mobile lamellar panel nominal section 68 x 81 mm.



### HARDWARE

Maico Multi-Matic standard hardware with tilt and turn panel and lever rod. Complete with anti-burglary striker plates and pawls along the entire perimeter.



### GASKET AND SEAL

Triple abutment sealing profile with quadruple gasket.  
Integral glazing bead in different shapes.



### DOUBLE-GLAZING

Use of low-emission double-chamber triple glazing with Argon gas as standard, in accordance with the current regulations. Of variable thicknesses and types (solar control, safety, acoustic...) according to requirements. Also available with warm edge ducts.



### THERMAL TRANSMITTANCE\*

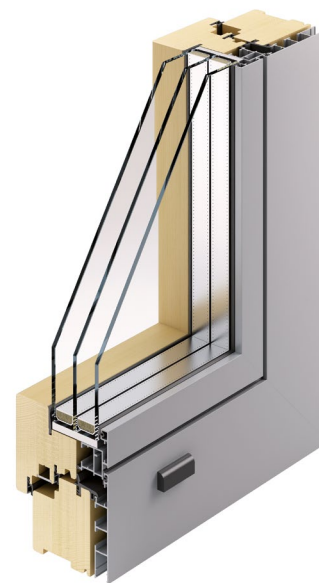
Thermal insulation achievable up to UW value of 0.83 W/m<sup>2</sup>K

\*calculated thermal values (according to the standard UNI EN ISO 10077-1 and 2) with fir wood thermal transmittance on 1 panel window dimensions 1230 x 1480mm (according to the standard UNI EN 14351-1), low-emission double glazing with value Ug = 0.6 (W/m<sup>2</sup>K)



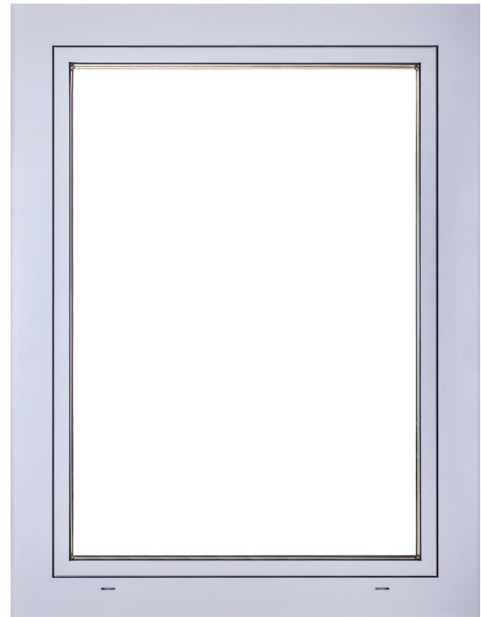
### ACOUSTIC PROTECTION

Starting from 31 dB for windows based on glass noise reduction values up to 45 dB.

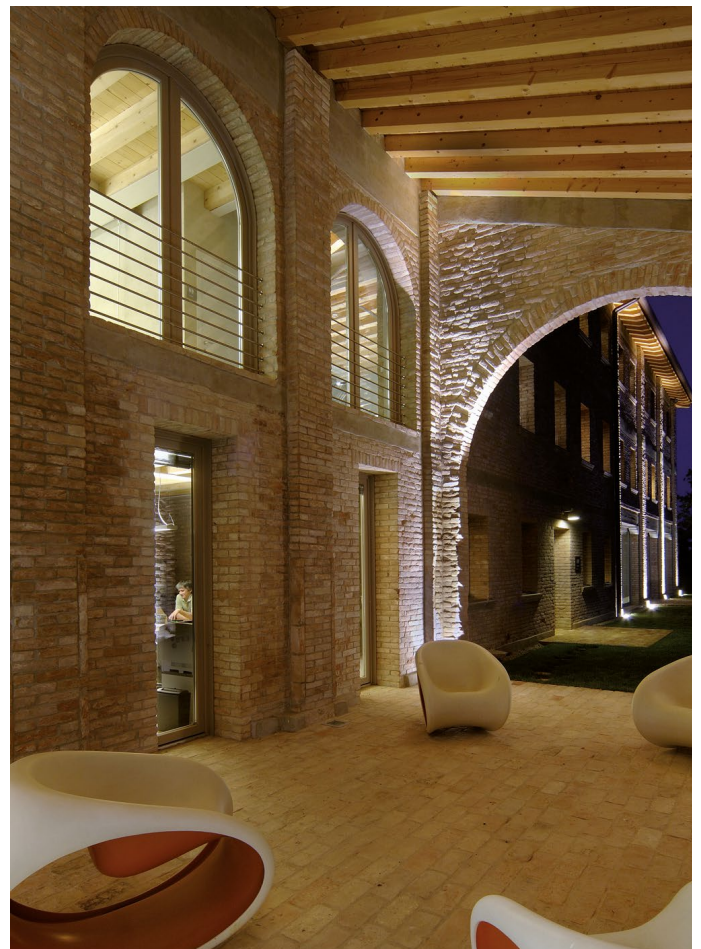




INTERIOR



EXTERIOR



## Strengths



### FINISHES OF YOUR CHOICE

The 32 standard finishes on wood of your choice, with the possibility of further customisations, are combined with the multiple choices for the colour of the external aluminium cover which can vary from a RAL of your choice to a wood effect. The external cover is welded in the corners for better aesthetics and durability over time (only in solid colours).



### STANDARD WARRANTY\*



Functionality of the windows  
- 10 YEARS



No fogging inside the glazing  
- 10 YEARS



Non-lamination of the laminated profile of wooden and wooden/aluminium windows- 10 YEARS



### PREMIUM\*



Window functionality - 10 YEARS



Paint durability of long-life painted windows ral 9001, 9010, 9016, 1013 - 15 YEARS\*\*



Paint durability of painted windows long life dark stained colours - 10 YEARS\*\*



No fogging inside the double-glazing - 10 YEARS



Non-lamination of the laminated profile of wooden and wooden/aluminium windows- 10 YEARS

\* See the conditions set out in the warranty certificate and the provisions of article 5 of the general terms and conditions of sale

\*\* According to the values defined by the standards ISO 4628-2-4-5, UNI EN 13722, UNI 8941-1-2-3



### DESIGN

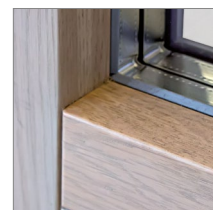
Our windows have a highly topical aesthetic, reflecting a clear language of forms. The building systems in step with the times, linked to the attention to detail, are adaptable to any environment to meet the individuality and functionality needs of our customers.



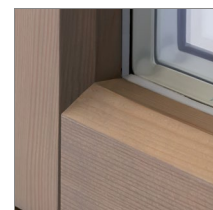
Concealed hinge



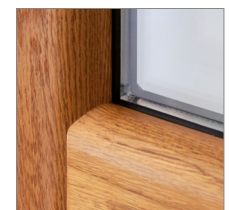
Coplanar kit with concealed hinge



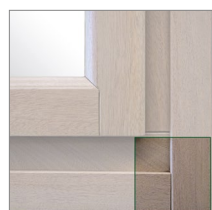
Wooden profile mod.Q



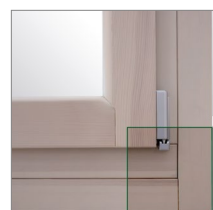
Wooden profile mod.M



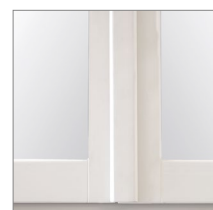
Wooden profile mod.S



T1 overlap wire cover



T2 coplanar wire cover



Central node entry "0" A6



Symmetrical central node A9



Central asymmetrical node A5



### SAVINGS

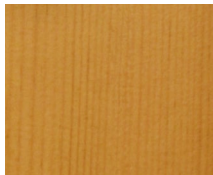
Waterproofing, profiles, glass with synthetic material spacer, gaskets and installation without a thermal bridge have a considerable influence on energy savings and, consequently, on the cost of bills.

## Finishes

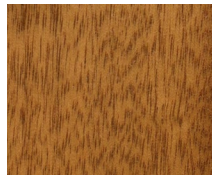
### STRIP 1 - STANDARD



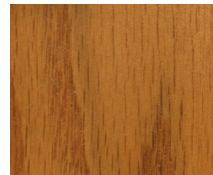
Essence: Pine  
Colour: Natura



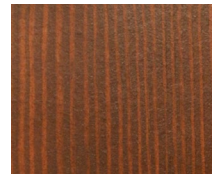
Essence: Pine  
Colour: Ambra



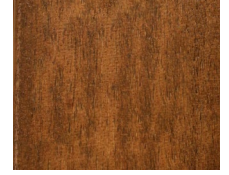
Essence: Okoumè  
Colour: Ambra



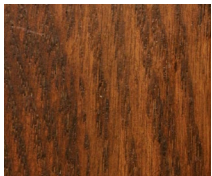
Essence: Oak  
Colour: Ambra



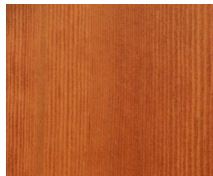
Essence: Pine  
Colour: Cannella



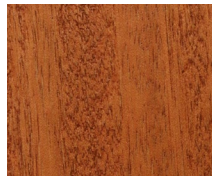
Essence: Okoumè  
Colour: Cannella



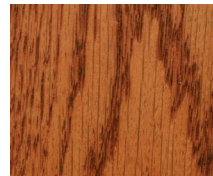
Essence: Oak  
Colour: Cannella



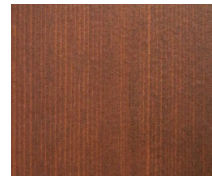
Essence: Pine  
Colour: Miele



Essence: Okoumè  
Colour: Miele



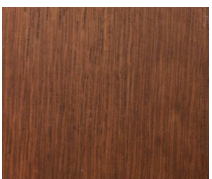
Essence: Oak  
Colour: Miele



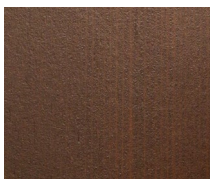
Essence: Pine  
Colour: Brandy



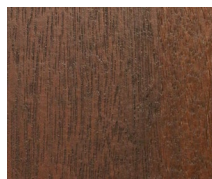
Essence: Okoumè  
Colour: Brandy



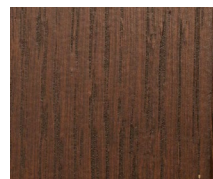
Essence: Oak  
Colour: Brandy



Essence: Pine  
Colour: Moro

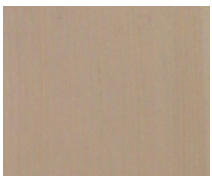


Essence: Okoumè  
Colour: Moro

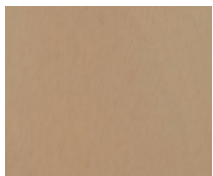


Essence: Oak  
Colour: Moro

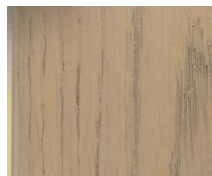
### STRIP 2 - WITH SURCHARGE



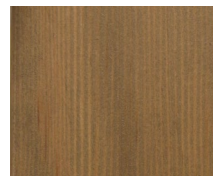
Essence: Pine  
Colour: Corda



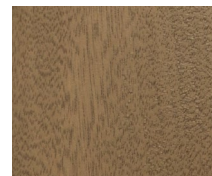
Essence: Okoumè  
Colour: Corda



Essence: Oak  
Colour: Corda



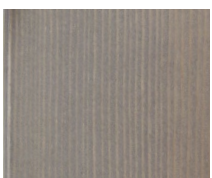
Essence: Pine  
Colour: Fieno



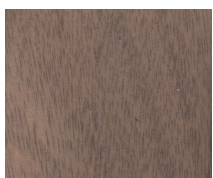
Essence: Okoumè  
Colour: Fieno



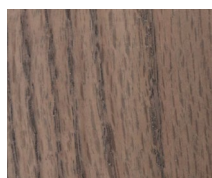
Essence: Oak  
Colour: Fieno



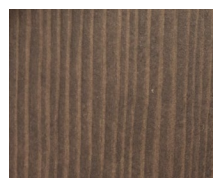
Essence: Pine  
Colour: Argilla



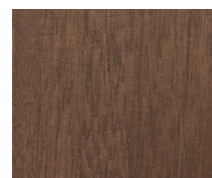
Essence: Okoumè  
Colour: Argilla



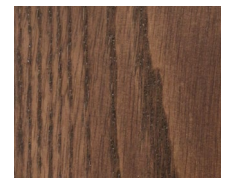
Essence: Oak  
Colour: Argilla



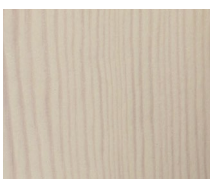
Essence: Pine  
Colour: Vinaccia



Essence: Okoumè  
Colour: Vinaccia



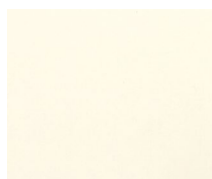
Essence: Oak  
Colour: Vinaccia



Essence: Pine  
Colour: Sbiancato cenere



Essence: Pine  
Colour: Ral 9010



Essence: Okoumè  
Colour: Ral 9001



Essence: Oak  
Colour: Ral 1013

The colours are approximate  
They may undergo variations

OTHER COLOURS ON REQUEST.



**GIEMME**  
Italian Windows Design



For technical, constructive and typographical reasons, the colours, descriptions, technical and dimensional details, as well as any other indication and/or information contained in this catalogue may be changed without notice, also based on technological evolution or on the availability of certain materials and/or components. In order to avoid any misunderstanding with its customers, Giemme Forli srl invites you to view all the characteristics of its production at the authorised points of sale. VERS. 0VXQ / 11-22-EN